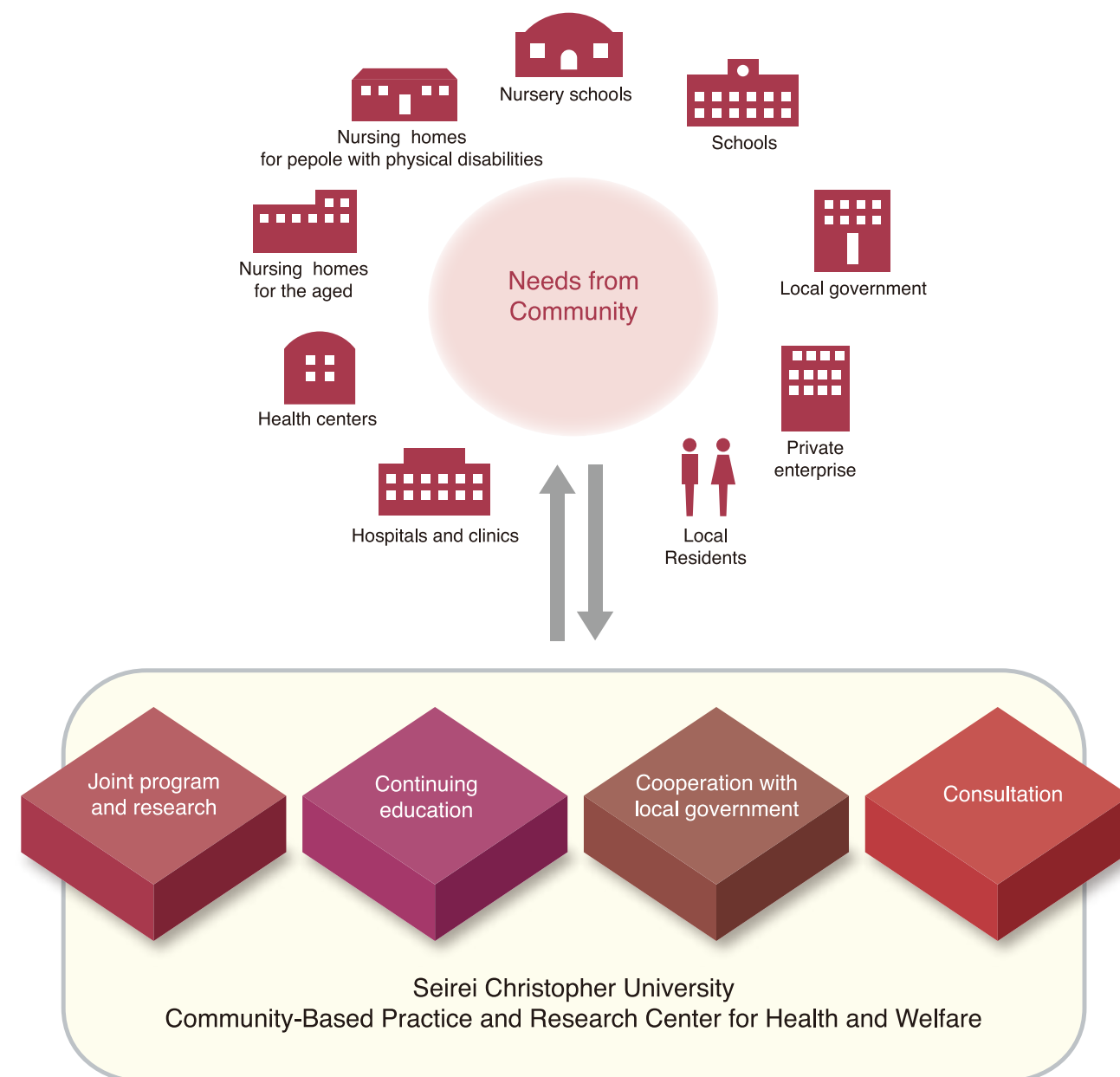


About the Center

The Community-Based Practice and Research Center for Health and Welfare (CCHW), established in November 2009, was the first research center in SCU. It aims to share its knowledge, skills, and human resources that have been accumulated in SCU's long history in order for the community to promote the well-being of individuals. As a leading institution in health promotions in the community, SCU makes efforts to meet a wide variety of needs in the community related to healthcare and welfare.



International Education

SCU provides a wide range of international programs and services for SCU students in order to nurture healthcare professionals who can see, deliberate, and challenge current healthcare issues with international perspectives. Currently, there are study tours and practicum programs for SCU students held in seven different countries and areas throughout the year. Many SCU students participate in, enjoy, and benefit from those programs. We believe there are infinite positive effects on students from the experiences of visiting healthcare/welfare facilities in different cultures and that interacting with foreign students who share the same goals and ambitions to become healthcare professionals in the same fields of study benefits our students greatly. On campus, students appreciate special lectures and workshops given by visiting foreign scholars who lead the world of healthcare and welfare. Students also enjoy networking events on campus to meet foreign students and scholars in their areas of study.

Continuous Dedication to Global Healthcare Education

As a leading university specializing in healthcare in Japan since 1992, SCU has been committed to promoting social awareness and to understanding the importance of healthcare regionally and nationally. SCU emphasizes the importance of education and training for future healthcare leaders, specifically those in developing countries, in order to increase the level of quality of healthcare in the world. Therefore, SCU gladly welcomes international students, scholars, and trainees to campus and provides them the opportunity to learn Japanese healthcare systems. With a rich learning environment surrounded and supported by various clinical settings of the Seirei Group, SCU makes it possible for them to achieve their goals of what they wish to learn and find in Japan.

International Exchange Center

As a part of SCU's global strategy, SCU International Exchange Center (IEC) defines its mission to be promoting the global awareness of students, faculty and scholars on campus. To this end, IEC supports a variety of cross-cultural activities both on and off campus throughout the year to enrich the experience of both local and international students/scholars. For international students on campus, IEC helps them concentrate on their study and meet their academic success at SCU. IEC is here to provide them tips and useful information, which would make their life in Hamamatsu worry free.

IEC supports and coordinates programs for students, scholars, and healthcare professionals at SCU and in exchange programs with SCU's partner institutions and organizations. Moreover, as a liaison office of international affairs at SCU, IEC works with schools, universities, and individual scholars overseas to enhance academic and student exchanges as well as international collaborations.

If you would like to know more about SCU's international activities, including student overseas programs, training programs for international students/healthcare professionals, and partnerships/collaborations with foreign institutions, please contact IEC.



International Practicum in Brazil



Special lecture by a professor from Norway



Students from Singapore on Overseas Clinical Attachment at one of Seirei's hospitals



Site visit for public health activities in China